



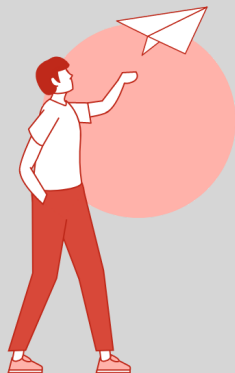
**PLANO ISD**

DYSLEXIA THERAPIST TRAINING CENTER



Our students with dyslexia are much like the variable needs of a paper airplane. There's a delicate balance between the forces that impact plane flight.

The slightest difference in folds or asymmetry cause it to veer off course. Although delicate, the sharp precision and thoughtful concentration of folding allow the plane to soar.



*Are you interested in becoming a Certified Academic Language Therapist (CALT)?*

## **MISSION:**

"Our mission is to provide robust and engaging training that will transform your expert intervention approaches to be efficient and responsive to the various needs of students with dyslexia and related disorders."

## **WE OFFER**

## **CONTACT**

*US NOW*



469-752-8921  
Vanessa Conatser



[vanessa.conatser@psd.edu](mailto:vanessa.conatser@psd.edu)



2700 W. 15th Street  
Plano, Tx 75075



### **YEAR 1 TRAINING**

- 6 days of training in July
- 6 seminar days throughout the school year
- 5 demonstration videos
- Additional assignments, reports, and article summaries through Canvas.
- At least 350 contact practicum hours with students



### **YEAR 2 TRAINING**

- 4 days training in July
- 4 seminar days throughout the school year
- 5 demonstration videos
- Additional assignments, reports, and article summaries through Canvas.
- Continuation of contact practicum hours with students (700 required total)



### **CERTIFICATION**

Successful completion of the program qualifies trainees with a Masters degree to take the ALTA Exam to become a CALT (Certified Academic Language Therapist)

Visit the [Plano ISD Dyslexia Website](#) for detailed information!

**THE DIVERSE NEEDS OF STUDENT REQUIRE DIVERSE SOLUTIONS**